



Ka Rep *Sying*



U Sying (*Zingiber officinale* Rosc.) u long uwei na ki marrep uba kongsan bha bad u dei na ka iing ka sem jong ki jingthung ki jingtep ba la tip kum ka **Zingiberaceae family**. Ha kine ki thain shatei lam mihngi u long u marrep ba la tip kum u cash crop (u jingthung ba kham ai pisa) uba ngi lah ban pyndonkam ia u ha ka shet ka tiew (culinary preparations), ha kaba shna ia ki dawai ki dashin (pharmaceutical preparations), ha kaba pynbang ne pyniwbih ia ka jingmad jong ki jingdih ba ngi ong ki umsoh (flavourant in soft drinks), ha kaba shna ia ki jingdih ba pynbuaid bad ki bym pynbuaid (alcoholic and non-alcoholic beverages) bad ruh ha kaba shna ia ki ashar bad ki jingbam dihsha kum ki biskit (confectionary, pickles) bad kiwei kiwei de.

Na baroh ki jylla kiba don ha ka thain shatei lam mihngi ka Meghalaya ka wan ba-nyngkong eh ha ka rep sying ban ia ka Mizoram, Nagaland, Manipur ne Assam bad ha ri India pat ka wan ba-ar. Namar ba ka jingpyndonkam ia ki sboh dawai (chemical fertilizers) hangne ha jylla ka dang duna palat, kumta kan long ka kabu ksiar ia ngi ban lah ban pynmih khambun ki jingshna na u sying kum ki jingber ha kaba shet jingtah, ki kynja jingdih kumjuh ki jingbam kiba shngaiñ ia ka koit ka khiah jong ngi ki briew (organic products) kum u sying powdar, ka umphniang, ki umsoh, ki mitmit bad kiwei kiwei bad kane kan nang iarap shuh shuh ban kyntiew ia ka ioh ka kot ki nongrep kumjuh ia ka jylla.

Ia u sying lah ban thung ha ki jaka lum kiba haduh 1500 mitar ka kynjang na sla duriaw tangba u kham bha ka jingmih ha ki jaka kiba ka kynjang ka long hapteng 300 bad 900 mitar. Ka jinghap slap ba shu malu mala ha ka por ba sdang thung bud pat da uba kham jur bad kham

ryntih ha ka por ba u kha khun ne kha tynrai ryngkat ka mariang kaba rang la kumno kumno shi bnai shwa ban tih ia u ka long ka suiñbneng kaba bha tam ban rep sying. Ka khyndew kaba sboh, ka bym shong um bad kaba ioh lyer ka long kaba biang bha ban rep sying khnang ban lait na ka jingpang pyut sying. Ia u sying ym ju dei ban rep lynter tang ha kajuh ka jaka hynrei dei ban ia kylliang jaka bad ki jingthung kiba pur kum u phresbin, motor ne rymbai ktung (leguminous crops) khnang ban ym ailad ia ka jingpyut sying ban pur manla u snem ha ka juh ka jaka.

Ka por thung ia u sying dei ha u Lber ne iaiong (March-April) bad lah pat ban tih ia u ha u Nohprah, Kyllalyngkot ne wat haduh u bnai Rymphang (December/January/February). U sying u ju puh syntiew ha ki bnai hap slap jong u Jylliew bad Naitung.

KI JAIT SYING : Ki jait symbai sying kiba kham bha ha ka jingmih bad kiba la pynroi ha ka pham sorkar (Ginger Development Station) kaba don ha ki thaiñ Umsning ki long u Nadia, u Varada bad u Wynad kynthup ki sying tynrai na ri lum Khasi kum u Sying Makhir bad u Sying Khmoh.

KA JINGJIED SYMBAI : Jied ia u symbai uba stang bad ba phyrnai ka snep. Kyntait ia u symbai uba lah jngem bad rben ka snep namar une u dei uba lah don ia ka jingpang pyut sying. Kynmaw ruh ban peit thuh lypa naduh ka por ba ki dang don ha lyngkha nangno ban shim sying symbai khnang ba phin ioh ia u symbai uba khlain.



JINGDONKAM SYMBAI : Na ka bynta ka jaka kaba heh kumba shi hektar ne ar akar shiteng donkam kumba 1500 kg u symbai uba ka jingheh bad jingkhia kan long antad kumba 25-30 gm ei ei.

KA JINGPDEM DAWAI ĪA KI SYMBAI : Kane kan ĩarap ban ĩada ĩa u symbai na ka jingpang pyut kumjuh ruh na ka pang ĩap tram. ĩa kane lah ban leh da kaba pdem ĩa ki symbai kumba shiteng kynta ha ka dawai ba la khleh lang ĩa 5 gm ka *Trichoderma harzianum* ryngkat 5 gm ka *Pseudomonas fluorescens* ha man ka shi litar ka um bad sa thad pat ĩa kine ki symbai ha ka jaka ba tngen ne ba kah syrngiew.

KA JINGPYNKHREH ĪA KA JAKA :

Ym ju dei ban lur ne puh palat ĩa ka khyndew. ĩa ki nur donkam ban rah da kumba 6 inshi khnang ba ka jaka rep kan ym shong ne lang um bad ka jingĩar jong ka pyngkiang kan long kumba shi mitar. Ka jingjrong jong kine ki nur pat kan long kat kum ka jingidonkam bad ka jingjngai na kawei ka nur sha kawei ka nur ka dei ban long shi phut shiteng.

KA RUKOM THUNG :

Īa ki symbai sying dei ban buh ha ki thliew kiba ka jingjylliew kan long kumba 3-4 inshi eiei ha ka jingjngai kaba 8-9 inshi. Barabor ka ju shim por tang kumba 10-15 sngi ba un seilung bad suhthied bad teng teng pat ka ju shim por haduh ar bnai eiei.

KA JINGAI SBOH :

Ban ĩoh ĩa u sying uba bha donkam ban ber da ka sboh mariang (sboh eit masi ne sboh ĩiut) kumba 25-30 ton shi hektar ka jingheh ka jaka rep ha ka por ba pynkhreh ĩa ka jaka lane da kaba shu buh ha ki thliew ki ban thung ĩa u sying. Lada yn lah ban ber ryngkat ha kine ki thliew da u Neem Cake kumba 2 ton shi hektar kan ĩarap ban pynduna ĩa ka jingpyut sying ryngkat ka jingkha roi ki Nematode (ki kynja wieh

kiba rit kiba ktah ia ka koit ka khiah u sying). U Neem Cake u iarap ruh ia u sying ban mih kham bun. Shuh shuh lada yn khleh ryngkat ha ka sboh mariang da kumba 2.5 Kilo ka Trichoderma bad sa buh pat ia kane ka jingkhleh ha ka jaka ba long syrngiew kumba shi taiew ei ei kan iarap ban pynbha, pynsboh bad pynim ia ka khyndew. Lah ruh ban ai ka biofertilizer kum ka BIO NPK kaba don ia ki phngit jingim (Azotobacter chroocum, Phosphobacteria bad Frateuria aurantia) kumba 35 kilo ha ka shi hektar ka jaka rep ban kham pynbha bad pynkhlain ia ka jingmih u sying.

Kaba tap na jrong ki nur sying da ki sla jyrngam (mulching) kan iarap ban pynkhie lung kham kloï ia u sying bad kaba theh ruh da ka um eit masi na jrong kine ki sla kan ailad ia ki phngit jingim (beneficial microorganisms) ban shong bad kharoi khnang ban pynpahuh ia ki jingbam kiba u sying u donkam. Haba leh kumne kan iarap ruh ban iada ia ka dewsoh ban ym shah rong noh ha ka umslap. Ia kane lah ban leh da kaba pyndonkam kumba 10-12 ton shi hektar ki sla jyrngam haba sdang thung ia u sying bad pynbud pat da 5 ton shi hektar hadien 40 bad 90 sngi ba lah dep thung ia u.

Khngan ban kham pynsoh shuh shuh ia ka jaka rep sying donkam ban thung sying ryngkat ryngkat bad ki jingthung kum u rymbai ktung, phresbin lane bad ki kynja dai kum u pigeon pea. Nalor ba kin pynsoh ia ka khyndew kin ai pisa ruh ia ki nongrep namar kine ki dei ki jingthung ba kham dawa ha ki iew ki hat. Kaba pyndonkam ia u dpei ding kan iarap ruh ia ka khyndew ban kham pahuh u jingbam Potash uba u sying bad baroh ki jingthung ki donkam bha.

KABA AI KHYNDEW

Kaba ai khyndew ia u sying ka iarap ym tang ia ki thied ba kin ioh Iyer hynrei ban kham pynheh ruh ia u sying. Ka iarap ruh ban pynlait ia u sying na ki ñiang dkhap bad kumjuh ruh ban kham pynduna ia ki

ñiut ne ki kynbat. Dei ban ai khyndew hadien 45 sngi ba la thung ïa u sying bad ka sien ba ar pat kan long hadien 120-135 sngi.

KABA THUNG SYING RYNGKAT BAD KIWEI KI JAIT JINGTHUNG

Ïa u sying lah ban thung ryngkat bad ki jhur, ki symbai dai ne ki symbai umphniang bad ruh bad kiwei kiwei ki jait jingthung lane tang u sying marwei. Namar ba u dei u jingthung uba kham khelaiñ ka kjit jingbam napoh khyndew kumta donkam ban thung pynbud ha ka jaka rep sying da kiwei pat ki jait jingthung kiba lah ban pynsboh ïa ka khyndew. Ym ju dei satia ban pynbud da u sohsaw, phan, sohmynten ne da u sohbaingoniöng ha ka jaka ba la rep sying namar kine ki dei ki jait jingthung kiba lah ruh ban wanrah ïa ka jingpang ïaptram (*Ralstonia solanacearum*) ha u sying. Hynrei ki jingthung kum u rymbai ktung ne u sohkhia ki long ki jingthung kiba biang bha ban thung ryngkat ryngkat (intercrop) bad u sying.



KA TIH SYING

Ka por ba biang bha ban tih ïa u sying ka long hadien 8, 9 ne 10 bnai bad kane pat ruh ka shong eh ha ki jait jait sying. Lada baroh ki sla kila sdang stem bad ïap tyrkhong ka mut ba ka por ban



tih ia u sying ruh ka long kaba lah biang. Na ka shi hektar ka jingheh ka jaka la khmih lynti ban ioh kumba 10-15 ton eiei u sying uba bha.

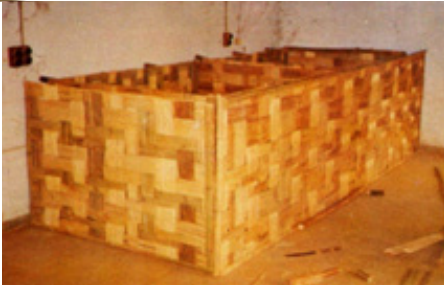


KA JING PYNKHUID

Hadien bala khleid ne pyniakhlad ia u `ing kmie na ki khun dei ban pynkhuid bha ia ka khyndew. Ynda u sying u la khuid donkam ban da thad pynrkiang ha ka sngi kumba katto katne kynta bad nangta sa buh pat ia u ha ki rynsan lyntang ne ki rynsan siej khnang ban buh symbai ne ban die ia u hadien.

KA RUKOM BUH SYMBAI

Namar ba ia u sying donkam ban buh shuwa haduh kumba 120 sngi eiei (kata naduh ka por ba tih kat haduh ban thung) kumta donkam ban buh bha ia u khnang ban lait na ka jingpyut, jingring sti, jingtyrkhong um bad kumjuh ruh ba un ym pat mih shylluit khlem pat dei ka por. Kumta lada ym biang ka rukom buh ka jingduhnong ka lah ban kot naduh 10 wat haduh 50 na ka shispah. Lait na ka rukom buh sying ha ki thliew kaba la ju leh paidbah da jan baroh ki nongrep, ka don pat sa kawei ka rukom buh sying kaba kham suk bad kham duna ka jinglut jingsep bad kaba la leh ha ka ophis pynroi ia u symbai sying kaba la tip kum ka Ginger Development Station, kaba don ha Umsning (mar pyrshah ka kper slashka jong ka sorkar). Da kane ka rukom baroh ki nongrep ka jylla ki lah ruh ban bud. Kine harum ki long ki jingdonkam ha ka ban shna ia kata ka jingbuh sying.



Ki jingdonkam:

- 1) Ki syiej ryngkat ki tyrpait siej
- 2) Eit masi ba dang im
- 3) Ka ktieh ba la khleh lang ka khyndew + ka eit masi + ka um
- 4) Skum Kba uba rkhiang.
- 5) Ki sla tyrkhong bad ka plastik kaba heh

Ka rukom shna:

- Ar tylli ki jaka buh (chambers) kiba heh 2m x 2m sawdong (square) bad ka jingjrong pat kaba long 1.4 m (kumba paw ha ka dur).
- ĩa ki kynroh jong kane ka jaka buh sying la shna da ki ar syrtap ki tyrpait siej kiba ĩa jngai kumba 8 inshi kawei na kawei bad hapteng kine ki tyrpait la thep da ka khyndew bala khleh lang bad ka eit masi. ĩa kine ki tyrpait dei ban ai jingkyrshan da ki siej.
- ĩa katei ka jingkhleh bad jingshna donkam ban ap kumba 20-25 sngi khnang ba kan long kaba rkhiang bad ba skhem bha.
- ĩa ka kynroh tyrpait kaba shabar donkam ruh ban da sbur ne lape da katei ka juh ka jingkhleh ba la batai haneng.

Ka rukom buh sying

- Īa u sying dei ban buh ha kata ka rukom ba ha man ka syrtap sying dei pat ban tap da u skum kba uba la rkhiang bha ha ka jingrben kaba shi inshi eiei u sying la 4 inshi u skum kba.
- Ka jingrben u skum kba na trai bad na jrong duh ka dei ban long 8 inshi bad na jrong jong une u skum kba dei pat ban tap da ka plastik ha kata ka rukom ba ĩa ki tduh jong ka plastik donkam ban da shan pynskhem bha da ki siej (kumba la pyni ha ka dur).
- Da kane ka rukom lah ban buh kumba 350 haduh 400 Kilo u sying ha kine ki jingbuh (chambers) wat haduh 6, 7 ne 8 bnai lynter.

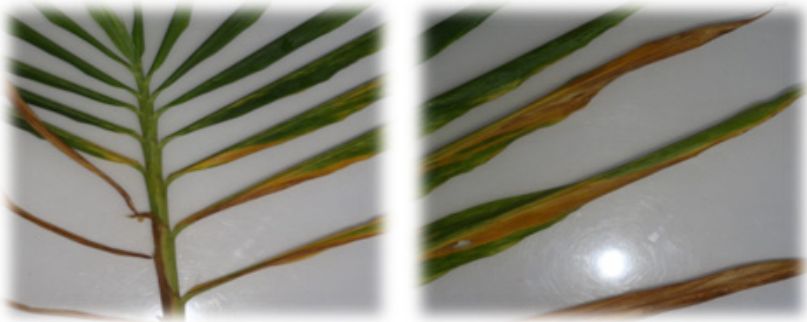
Ki jingmyntoi:

- Namar ba ĩa u sying la buh ha kane ka rukom kumta ka lyer ba nabar kam lah satia ban ksam shapoh bad kane ka pynlong ĩa ka jingsyaid ne jingshit hapoh (temperature) ban ym kylla satia.
- Ki skum kba ba buh ha man la ki syrtap ki ailad ruh ĩa ka lyer ban ksam ne ĩaid lyngba na kawei ka syrtap sha kawei pat ka syrtap bad kane ka pyntngen ĩa u sying.
- Ka jingduhnong na kaba ring sti ne khia thew u sying ka duna bha ne kam don satia.
- Haba buh sying kumne ka rong, ka dur ka dar bad ka jingheh jingrit jong u sying ka sah kumjuh (kum uto uba dang shu tih na thliew).
- Lada jia ba u sying ba buh ha kawei na ki syrtap u pyut, da lei lei ruh kane ka jingpyut kan ym lah ban pur sha kiwei pat ki syrtap.
- Īa kane ka jingbuh sying lah ban pynbha da kaba sbur ne lape khyndew manla u snem.

KI JINGPANG

Ka jingpang pyut sying (*Pythium aphanidermatum*)

Ki dak ki shin : Kane ka dei ka jingpang kaba kynrei bha bad kaba shong tynrai ha u symbai (seed borne) lane ha khyndew (soil borne) bad ka ju sdang wan ha lyngkha rep naduh u bnai Jylliew-Naitung ter ter. Ka dak jingpyut ka sdang ha kaba ka jingstem ki sla kiba na trai ka pur sha ki sla kiba sha jrong. Ki thied jong u sying uba la shah ktah ki pyut bad kylla rong ktieh bad bunsien u jyntang sying u suk bha ban mih haba shu phut ia u tang malu mala. Ha ki bnai slap ne bnai lyiur kane ka jingpang pyut ka ju sted bha ban pur wat sha ki tynrai sying kiba dang koit dang khiah. Ki bynta ba pyut ki ju khring ia kiwei ki phngit jingim (fungi, bacteria) kumjuh ia ki skaiñ sying kiba pynkha roi ia ki ksaiñ.

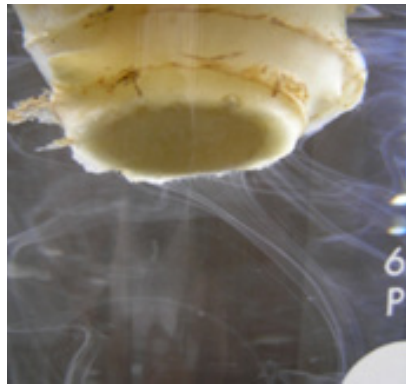


Ka jingsumar : Ym ju dei ban khlung `ing kmie ne `ing kiaw bad ym ju dei ruh ban ailad ia ka um ban lang ne ban shong ha ki nur sying. Ia ki symbai sying dei ban da jied bha shwa ban thung bad ym ju dei satia ban thung da u symbai ba la don ka dak pyut. Jied ia u symbai uba stang bad phyrnai ka snep bad da lei lei ruh ym dei ban thung ia uba rben bad jngem ka snep namar une u dei uba lah don ia ka jingpang. Shwa ban thung kan bha shibun ban da pdem dawai ia ki symbai sying ha ka um ba la khleh lang bad ka *Trichoderma harzianum* lane ka *Trichoderma viride* da kaba khleh 8-10 gm ka dawai ha man ka shi litar ka um lane

bad ka Bordeaux mixture (1%). Īa ki tynrai ba la kham jur ka jingpyut dei ban weng noh bad jreiñ ĩa kine ki tynrai da ka Trichoderma ne ka Bordeaux mixture (1%) kumba la batai ka jingkhleh haneng.

Ka pang ĩaptram (*Ralstonia solanacearum*)

Ki dak ki shin : Kane ka dei ka jingpang ba kham shyrkhei bad ka ju sdang naduh ki bnai Nailar-Naitung. Ki sla bala shah ktah ha kane ka jingpang ki kdor ne khyrwait sha lyndet bad ki long rong tama (bronze colour). U jingthung baroh shiryñeng u shu ĩap sti bad na tynrai mih pat ka jingsma iwtung. Lada yn ot da ka tari ĩa une u tynrai ba la ĩap sti bad pdem pat ha ka um, suki suki yn mih ka kynja dud na ka bynta bala ot. Ki dak kiba kham paw shynna dei ka jingĩap sti jong ki tynrai jingthung ba dang kham lung ha ka por shiteng sngi.



Ka jingsumar : Ka thymmei ne ka daw ba pynsaphriang ĩa kane ka jingpang dei namar ba thung da ki symbai sying kiba la kem pang lypa. Kumta dei ban phikir bha ha kaba jied ĩa ki symbai bad la kumno kumno dei ban wanrah symbai tang na ki jaka ki bym pat ju don ĩa kane ka jingpang. Kumba 3-4 snem lynter ym ju dei satia ban rep sying biang ha kito ki jaka kiba la pynmih ĩa kane ka jingpang bad ym ju dei ruh ban rep pynbud ha kine ki jaka da ki jingthung kum u phan, sohsaw, sohmynten ne sohbaingonĩong hynrei dei ban pynbud da ki jingthung kum u rymbai

ktung, motor, phresbin, muli, tyrso bad kiwei kiwei khnang ban pyniāp thngan iā ki phngit jingim kiba pyniāp tram iā u sying namar kine ki jingthung haneng kim dei satia ki jingbam jong kita ki phngit jingim. Barabor bad shwa ban thung kan bha shibun ban da pdem dawai iā ki symbai sying ha ka um ba la khleh lang bad ka ***Trichodermaharzianum*** or ***Trichodermaviride + Pseudomonas florescens*** da kaba khleh 8-10 gm ka dawai ha man ka shi litar ka um lane bad ka Bordeaux mixture (1%). Iā ki tynrai sying ba la shah ktah ha kane ka jingpang dei ban phut tynrai noh bad sa jreiñ pat iā ka khydew da ka ***Pseudomonas florescens*** da kaba khleh kumba 10 gm ka dawai man ka shi litar ka um lane jreiñ da ka Bordeaux mixture (1%). Iā ki tynrai bala phut dei ban da thang ha ka ding bad ym ban shu bret kumto kat shaba lap bad kat shaba shem.

KI KHÑIANG

Khñiang ksam jyntang (*Conogethes punctiferalis*)

Ki ksaiñ kiba ksam bad bam iā u dohnud jong u jyntang jong u sying ki dei ki khun jong ka thapbalong kaba la tip kum ka ***Conogethes punctiferalis***. Haba ki bam kumne u sla u kylla stem bad ki shylluik ki iāp tyrkhong noh. Kane ka ju jia naduh u bnai Jylliew (June) ter ter haduh u bnai Risaw (october).



Ka jingsumar : Kaba lum bad pyniāp iā ki ksaiñ da ka kti ka long ka lad jingiāda kaba biang eh watla ka kham bam por. Lah ruh ban shu riam iā ki thapbalong da ki kynja lynten (light trap) bad iā kane dei ban leh naduh shiteng u Jymmang ter ter haduh u Naitung. Ka lad jingiāda kaba

khadduh ka long ban shu synreit da ka Nimbicidine lane ban synreit da ka **Beauveria bassiana** (shi shamoit sha ha shi litar ka um)

Ñiangbyrnai (*Holotrichia spp.*)

Une u dei u jait khñiang uba wan mih teng teng tangba u dei u khñiang uba jubor ka rukom pynjulong namar u ju bam ña ki thied bad kumjuh ña ki sying ba dang lung. Ka jingpynjulong ka ju kham jia ha ki bnai Nailar bad Nailur (August-September).

Ka jingsumar : ña une u khñiang lah ban ñada da ka lad ka lynti kaba kham shngain bad kata ka long ban khleh lang ha ka eit masi da ki phngit jingim bala tip kyrteng kum ki **Metarrhizium anisophilae** bad ña kane ka jingkhleh dei pat ban ber ha ki thliew ba thung ña u sying. Suki suki kine ki phngit jingim kin pynñap ña u khñiang da kaba pynñohpang shwa ña u. Ha ki jaka kiba kham kynrei une u khñiang lah pat ban ñada ña u da kaba pyndonkam da ka sboh Neem Cake ha ka jingkhleh kaba 40 Kilo na ka bynta shi hektar ka jaka lane da kaba khleh lang kumba shi shamoit ka Nimbicidine ne ka **Beauveria bassiana** ha shi litar ka um bad ña kane ruh sa khleh ryngkat bad ka sboh ne ka eit masi khnang ban pynduna ña ka jingkyngrei jong *u*.

KI ÑIANG DKHAP (*Aspidiella hartii*)

Kine ki khñiang ki pynjulong ña u sying da kaba kjit ña ka um (sap) jong ki khmat ne ki shylluit. Haba ka long kumne u sying u ring sti bad ñap tyrkhong noh bad um khie seilung shuh.

Ka jingsumar : ña u sying uba la shah pynjulong dei ban kyntait noh bad ha ki jaka buh sying lada yn khleh lang bad u skum dieng kan ñarap ban pynduna ña ki ñiang dkhap. ña kine ki khñiang lah ruh ban synreit da ka Neem Oil da kaba khleh shi shamoit ha ka shi litar ka um bad synreit manla ka 15 sngi.

Ki kamram kiba dei ban leh bad ki bym dei ban leh ha u Sying IPM

Kaba dei ban leh	Ka bym dei ban leh
Thung tang da ki jait symbai kiba lah pynithuh/kiba lah dep eksamin	Wat nym thung ia ki jait symbai ki bym iahap ha ka aiom (por thung) ne ka jingling ka jaka.
Ki symbai Sying (Rhizomes) ki dei ban long kiba khuid bad kiba lait na kino kino ki jingpang ne jingshitom. Pyndonkam da ki dawai Trichoderma (Biocides) shwa ban thung ia ki symbai Sying.	Wat nym khleh ia ki symbai Sying da kino kino ki dawai khñiang.
Thiew/Weng ia ki ñiut da ka kti shwa ban sop phlang (mulch) ne ai sboh dawai (biofertilizers).	Wat nym klet ban phut ñiut shwa ban ai/sop phlang (mulching) bad ai sboh dawai (biofertilizers).
Pyndonkam da ki sboh dawai (biofertilizers) katkum ka jingbthah na ka nomuna bal ah dep eksamin ia ka khyndew.	Wat nym leit khleh lang ia ka dawai pynim (micronutrients) bad ka sboh dawai (biofertilizer) ha ka ban pyniasoh lang hapoh ka khyndew.
Ka nur um kadei ban long kaba biang ba jlih bad kaba suk ban tuid, dei ban khreh lypa ia ka nur ba kan tuid bha ka um jakhlia. Kaba bha tam eh ia ka khyndew ka dei ban long kaba rashing (noh shiliang). Ka khyndew kaba noh rashing ka dei kaba kham bha.	Wat nym shah ba ka um kan lang hajuh. Wat nym jied ia ka khyndew kaba madan na ka bynta ban thung ia u Sying ban kiar na ka jinglang jong ka um.

Kaba dei ban leh	Ka bym dei ban leh
<p>Leit ban jgnoh ia ka lyngkha/ bri man la ka por ban iada na ki khñiang ne ki jingpang.</p>	<p>Wat nym pyndonkam ia ki dawai khlam (iapiong)/khñiang kiba long bih (Chemical pesticides).</p>
<p>Pynieng bad buh da ki jingriam/ shrip kiba pynshai thaba (Light traps) ban lumlang bad ban pynbeit ne sei ia ki ñiang sam thliew bad ki kynja thapbalong lada don kum kata ka jing noi dei ban khmih bha.</p>	<p>Wat nym pyndonkam dawai khñiang ba long bih (Chemical insecticides).</p>



La Pynmih Da Ka:

**Agriculture Information Wing, Directorate of Agriculture,
Lower Cleve Colony, Shillong-793003,
Meghalaya, India.**

